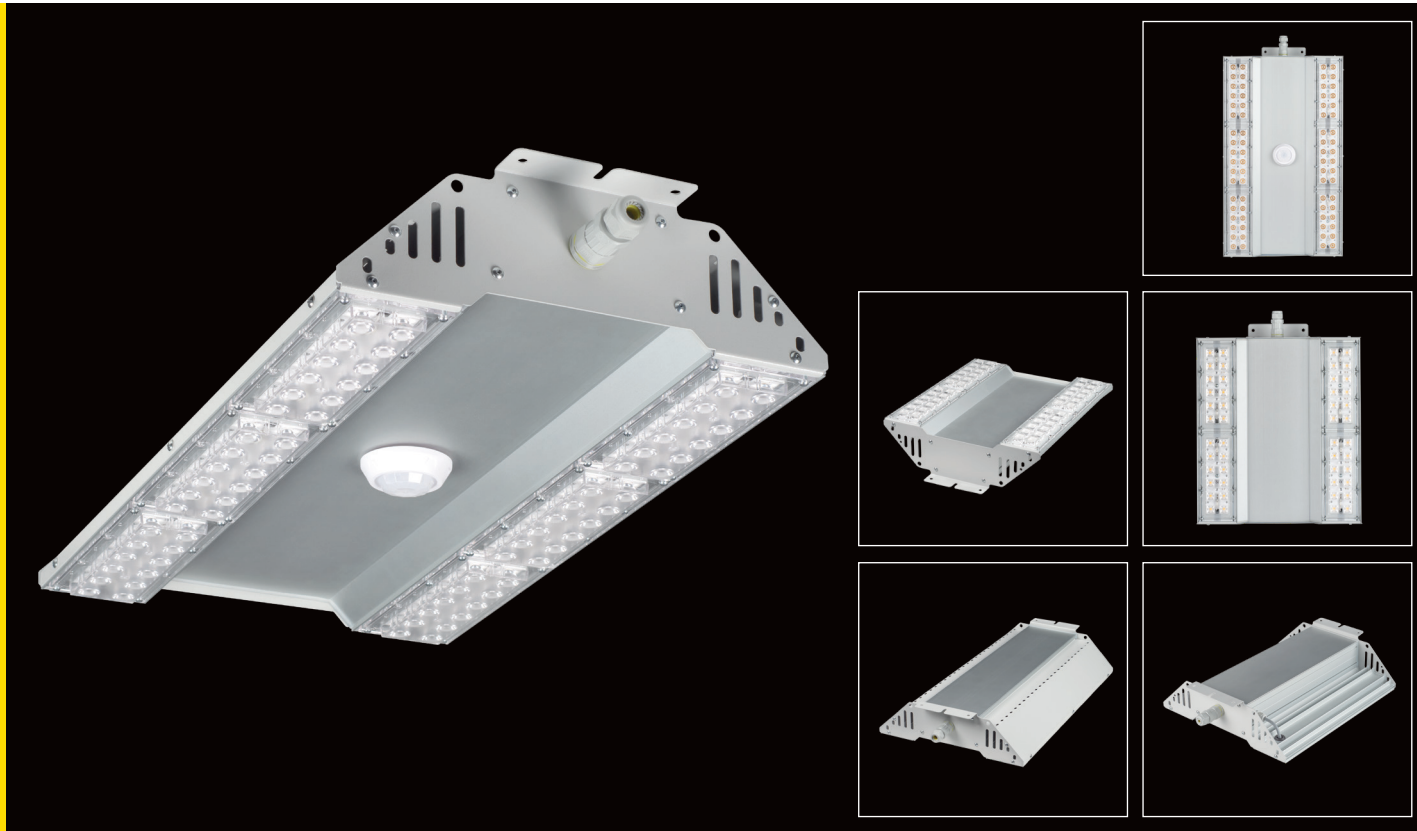


BAT



DESCRIPTION

The powerful industrial luminaire BAT delivers exceptional illumination for large - scale areas with high ceilings up to 15 m. Featuring DALI control for energy efficiency and precise lighting, it boasts an IP66 rating and operates between -20°C and +40°C. Available in 120 W to 300 W options, it adapts to various needs. BAT supports both pendant (with optional extended cable) and ceiling mounting for flexible installation

APPLICATIONS

This lighting solution is ideal for high-bay environments such as warehouses, factories, bus stations, airports, parking lots, car washes, gymnasiums, sports venues and cold storage facilities.

BENEFITS

- **Reliable producer:** Designed, developed and manufactured by ENIM, a trusted EU producer.
- **Exceptional Efficiency:** High-performance LEDs deliver up to 158 lm/W, ensuring maximum brightness with minimal energy consumption.
- **Versatile Power Options:** Available in 120 W to 300 W configurations, adaptable to various lighting needs.
- **Adaptable Optics:** Different optical options provide tailored illumination for diverse applications.
- **Intelligent Control:** DALI compatibility and motion sensors enhance energy savings and user convenience.
- **Engineered for Longevity:** An anodized aluminum heat sink and optional painted metal cover ensure durability, with a lifespan of up to 100,000 hours (L90 B10).
- **Rugged Protection:** IP66-rated for full resistance to dust and powerful water jets.
- **Compact & Convenient:** Space-saving design for easy integration into various environments.
- **Flexible Installation:** Supports pendant (with optional extended cable) and ceiling mounting.

TECHNICAL INFORMATION:

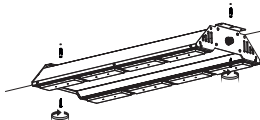
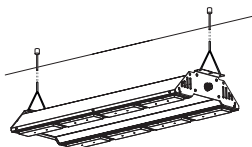


ELECTRICAL	V	Input voltage	90-305 VAC
	Hz	Rated voltage	50-60 Hz
	W	Luminaire wattage	120 to 300
	cosφ	Power factor	≥ 0,95
OPTICAL	Lm	Luminous flux	18000 - 42600
	Lm/W	Luminous efficacy	Up to 158
	K	Color temperature	3000 - 6500
	Tg	Performance temperature	25 °C
	C°	Ambient temperature range	-20°C ≤ Ta ≤ +40°C
	CRI	Color rendering index	≥80

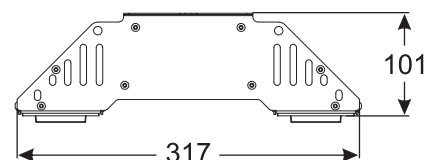
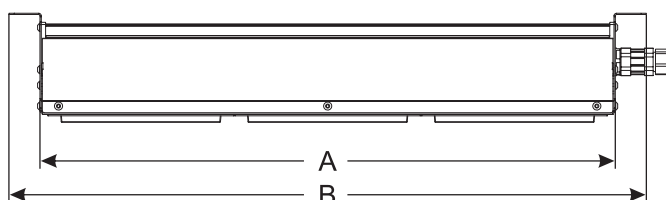
Number of LED's	4X12		6X12		8X12
Power	120	160	200	240	300
Lumious Flux, Lm	18000-18960	24000-25280	28800-30800	33840-34800	41400-42600
Efficacy, Lm/W	150- 158	150-158	144-154	141-145	138-142

Chromatic tolerance (original MacAdam)	Not higher than 5
Life expectancy L/B	L90 B10 by 100000 hrs (Ta = 25 °C)

HOUSING	Size	362 x 317 x 101 mm; 535 x 317 x 101 mm; 708 x 317 x 101 mm	
	Weight	Max 7,2 kg	
	Body material	Heat sink: cast aluminium, painted	
	Protection	IP66	
	Installation	Ceiling mounting	Pendant (optional)





RAL 7035 (40)



OPTICS	Light source	LEDs 5050
	Optics	Asymmetric optics lens
	Optics type	Very carefully selected optics suppliers, the optics are transparent to ensure minimal light loss
	Maintenance	Optical module sealed for life. No internal cleaning required
	Protection against light pollution	0 candela light emission above 90°

DRIVER	Input voltage	90-305 VAC
	Intelligent temperature Guard (ITG)	The intelligent temperature guard protects the LED driver from thermal overheating by reducing the output power or switching off in case of operation above the thermal limits of the luminaire or ballast.
	Overvoltage with a variable surge protection	Up to 6 kV
	Interfaces	DALI, switchDIM, corridor FUNCTION

OPTIONAL	Accessories		
	Code	Name	
	IL11009	BAT suspension cable set	

REMARKS	CLO	The light output of an LED module reduces over the course of its lifetime. The Constant Light Output (eCLO) function compensates for this natural decline by constantly increasing the output current of the LED driver throughout its lifetime
	Power factor (Cosφ)	≥ 0.95
	Recommended mounting height	Up to 15 m
		Luminaires are ready to install

LOGISTIC DETAILS:

Full pallet size/cm L*W*H	Number of luminaires per row	Number of rows	QTY per pallet/pcs
120 X 80 X 143	2	11	22
Volume per pallet		Kg per pallet	
0,82 m³		Netto	Brutto
		96,4	103

